

Integrated Programme to Build Resilience to Climate Change and Adaptive Capacity of Vulnerable Communities in Kenya



Proceedings of the Inception Workshop for Loiktoktoki Project

23rd March, 2016

Ntauwo Hotel, Loiktoktoki



Kenya Forestry
Research Institute



ADAPTATION FUND



nema
NATIONAL ENVIRONMENT
MANAGEMENT AUTHORITY

Integrated Programme to Build Resilience to Climate Change and Adaptive Capacity of Vulnerable Communities in Kenya

Proceedings of the Inception Workshop for Loiktoktoki Project

23rd March, 2016

Ntauwo Hotel, Loiktoktoki



**Kenya Forestry
Research Institute**



ADAPTATION FUND



nema
Mwongozo ya Kiwili wa Mazingira

©KEFRI 2016

This publication may be produced in whole or in part in any form for educational purposes or non-profit uses without permission of the copyright holder provided acknowledgment is made.

Cover caption:

Deputy County Commissioner Mr. Atudonyang and KEFRI Senior Deputy Director Dr. Ben Kigomo unveiling the Project. Looking on is Ms Wangari Kirumba, National Programme Coordinator NEMA (right) and Dr Gabriel Muturi, Project Focal Officer, KEFRI

Citation:

KEFRI 2016. Integrated Programme to Build Resilience to Climate Change and Adaptive Capacity of Vulnerable Communities in Kenya. Proceedings of the Inception Workshop for Loiktoktoki Project. 23rd March, 2016, Ntauwa Hotel, Loitokitok.

Compiled by: Kamondo B.M., Gitonga S., Muturi G., Njoki B.P. and Ochieng D. 2016.

Published by:

Kenya Forestry Research Institute
P.O. Box 20412-00200, Nairobi, Kenya
Tel:+254-724 259 781/2, +254-722-157 414
Email:director@kefri.org **Website:** www.kefri.org

Layout and Design: Charles Nyogot

Contents

List of Tables.....	v
List of Acronyms	vi
Acknowledgement	vii
1.0 Session 1: Introduction	1
1.1 Workshop Objectives	1
1.2 Opening Remarks.....	1
1.2.1 Remarks by Director - Kenya Forestry Research Institute	1
1.2.2 Remarks by Director General – National Environment Management Auth.....	2
1.2.3 Remarks by Loitokitok Sub-County Administrator.....	3
2.0 Session 2: Official Launch of the Project by Loiktoktoki Sub-County Commissioner	4
3.0 Session 3: Workshop Presentations and Discussion.....	6
3.1 Overview of Integrated Programme to Build Resilience to Climate Change and Adaptive Capacity of Vulnerable Communities in Kenya, Betty Prissy Njoki.....	6
3.2 Proposed Programme activities in Loiktoktoki Sub-County (Loitokitok Project) from April to September 2016.....	8
3.3 Plenary discussion	11
4.0 Appointment of Project Site Steering Committee	16
5.0 Session 3: Closing Session.....	17
6.0 Appendices	19
Appendix I: Program	19

Appendix II: List of workshop participants	20
Appendix III: NEMA Director General Remarks	22
Appendix IV: Power point presentations	25
Presentation 1: Overview of Integrated Programme to Build Resilience to Climate Change and Adaptive Capacity of Vulnerable Communities in Kenya, Betty Prissy Njoki ..	25
Presentation 2: Proposed Programme activities in Loitokitok Sub-County (Loiktoktoki Project) from April to September 2016, Dr. Gabriel Muturi	29
Presentation 3: Appointment of Project Site Steering Committee Dr. Gabriel Muturi	31

LIST OF TABLES

Table 1:	Key climate change resilience outputs and outcomes associated with KEFRI's project in Loiktoktoki	2
Table 2:	Proposed workplans for first and second quarters	9
Table 3a:	Plenary discussion - Questions and Responses	12
Table 3b:	Plenary discussion - Comments	14

List of Acronyms

ADRA	-	Adventist Development and Relief Agency
ASAL	-	Arid and Semi-arid Lands
BEM	-	Biodiversity and Environment Management
CBO	-	Community Based Organisations
CFA	-	Community Forest Association
CHERP	-	Central Highlands Eco-region Research Programme
DA	-	Designated Authority
DRSRS	-	Department of Resource Survey and Remote Sensing
EIA	-	Environmental Impact Assessment
HQ	-	Headquarters
ICRAF	-	World Agroforestry Centre - ICRAF
KARLO	-	Kenya Agriculture and Livestock Research Organisation
KBC	-	Kenya Broadcasting Corporation
KEFRI	-	Kenya Forestry Research Institute
KFS	-	Kenya Forest Service
M&E	-	Monitoring and Evaluation
MOA	-	Ministry of Agriculture
MOALF	-	Ministry of Agriculture Livestock and Fisheries
MoU	-	Memorandum of Understanding
NCPO	-	Noomaiyant Community Program Officer
NEMA	-	National Environment Management Authority
NIE	-	National Implementing Entity
SCAO	-	Sub-County Agricultural Officer
SDDR&D	-	Senior Deputy Director Research and Development
SH	-	Self Help
TSS	-	Training and Technical Service
VIRED	-	Victoria Institute for Research on Environment and Development
WRMA	-	Water Resources Management Authority

Acknowledgement

Kenya Forestry Research Institute gratefully acknowledges financial assistance provided by Adaptation Fund to hold the workshop as part of funds received for implementing the “Integrated Programme to Build Resilience to Climate Change and Adaptive Capacity of Vulnerable Communities in Kenya” in Loiktoktoki Sub-County. KEFRI also acknowledges resources and administrative support provided by the National Government of Kenya, County Government of Kajiado through its Loitokitok Sub-County, and National Environment Management Authority, the Adaptation Fund’s Kenya National Implementation Entity. KEFRI thanks all individuals and stakeholders who participated in the workshop. Finally, KEFRI thanks all those who worked tirelessly during preparation to ensure this important workshop was held successfully.

1.0 Session 1: Introduction

Chair Mr. Muriuki Loitokitok Sub County Agricultural Officer and Dr. Gabriel Muturi, Project Focal Officer at KEFRI

1.1 Workshop Objectives

Sub-County Agricultural Officer (SCAO) Mr. B. Muriuki called the workshop to order. He pointed out that the language of communication would be both English and Kiswahili for the benefit of all participants. He invited workshop participants to introduce themselves. Mr. Muriuki then requested Dr. Muturi, the Project Focal Officer at KEFRI to introduce the guests representing National and County Governments, National Environment Management Authority and Kenya Forestry Research Institute, and to outline objectives of the workshop to participants.

Dr. Gabriel Muturi clarified to the plenary the Inception Workshop had three objectives as follows:

- I. Appraise project players on the Integrated Programme to Build Resilience to Climate Change and Adaptive Capacity of Vulnerable Communities in Kenya
- II. Launch Programme activities in Loiktoktoki
- III. Present proposed work-plans for the first project biannual i.e. from April to September 2016

1.2 Opening Remarks

1.2.1 Remarks by Director - Kenya Forestry Research Institute (KEFRI)

Dr. Bernard Kigomo, Senior Deputy Director Research and Development (SDDR&D) – representing the Director KEFRI conveyed sincere apologies from Director KEFRI who was not able to attend in person. He informed the workshop that Dr. Chikamai, the Director KEFRI was attending the African Forest Forum at ICRAF. The SDDR&D clarified that the Adaptation Fund Project within KEFRI is domiciled under the office of SDDR&D. Dr. Kigomo extended his appreciation to the project development team for its patience while developing the Integrated Programme to Build Resilience to Climate Change and Adaptive Capacity of Vulnerable Communities in Kenya and congratulated NEMA for its leadership. The SDDR&D expressed his pleasure at witnessing completion of the long journey which was culminating with the launch of the project at Loiktoktoki, a project crucial to the local people. The SDDR&D expressed his optimism that the proposed project would overcome challenges that climate change was presenting to food security and water issues in Loiktoktoki Sub-County. Dr. Kigomo beseeched Loiktoktoki community to embrace the Project and assured them of KEFRI's commitment to ensure that the Project succeeded.

1.2.2 Remarks by Director General – National Environment Management Authority (NEMA)

Ms Wangari Kirumba, National Coordinator, Integrated Programme to Build Resilience to Climate Change and Adaptive Capacity of Vulnerable Communities in Kenya representing the Director General NEMA conveyed regrets from the Director General who was unable to attend the workshop due to a

NEMA Board meeting. Ms Kirumba however informed the workshop that the Director General would find time to visit and interact with implementers and beneficiaries of the Loiktoktoki Project.

In her personal statement, the coordinator expressed gratitude for support she received from KEFRI while developing the Programme. She congratulated KEFRI for being first among 11 implementing entities to launch its Programme component.

Mrs Kirumba read remarks from the NEMA Director General. In his remarks, The Director General informed the workshop that the launch of the KEFRI component also marked commencement of implementation of the Programme. The Director General informed the workshop of steps that had been taken to culminate in the launch of the Loiktoktoki Project as follows:

- Nomination of NEMA as the National Implementing Entity (NIE) by the Ministry of Environment, Natural Resources and Regional Development Authorities who is the Designated Authority (DA) for the Adaptation Fund in Kenya
- Accreditation of NEMA by The Adaptation Fund
- Programme design through call for proposals
- Programme elaboration focussing on targeted thematic areas under different executing entities (EE) in different sites in the country

The Director General highlighted the following key climate change resilience outputs and outcomes associated with KEFRI’s project in Loiktoktoki (Table 1).

Table 1: Adaptation Fund Programme Outputs and Outcomes

Output	Outcomes
Enhancing Climate Change resilience for improved food security	<ul style="list-style-type: none"> • Increased adoption of drought tolerant food crops and high value crops • Enhanced efficient food utilization through implementation of post harvest strategies and value chain approach • Diversified alternative livelihood sources • Increased food production through appropriate and efficient irrigation methods • Enhanced land productivity through ecological land use systems conservation strategies and management technologies
Improving climate resilient water management systems to enhance food security	<ul style="list-style-type: none"> • Established appropriate physical assets and infrastructure for water harvesting, storage and irrigation
Strengthening capacity for program implementation and climate change adaptation	<ul style="list-style-type: none"> • Strengthening capacity and knowledge management for Program implementation and climate change adaptation • Knowledge generation and dissemination

Further, the Director General informed the workshop that KEFRI will have responsibility of coordinating activities of four other institutions who are implementing other projects under the Programme. The Director General informed the workshop that KEFRI was therefore a key driver in the Programme as the other four projects together with the Loiktoktoki Project had a total budget of Ksh 428 million i.e. nearly half of the funding for Adaptation Fund Programme in Kenya. However, the Director General assured the workshop that NEMA had total faith in KEFRI and was looking forward to the Loiktoktoki Project achieving aspirations of the Adaptation Fund and more importantly aspirations of the targeted communities.

1.2.3 Remarks by Loitokitok Sub-County Administrator

Mr. Solomon Kereku on behalf of the Governor - Kajiado County welcomed the visitors including staff from KEFRI, NEMA, Community Based Organisations and Community representatives. The Sub-County Administrator particularly thanked NEMA and KEFRI for choosing Loiktoktoki Sub-county as a target site for the Integrated Programme to Build Resilience to Climate Change and Adaptive Capacity of Vulnerable Communities in Kenya. Mr. Kereku informed the workshop that the Project launch was at an opportune time when the issue of Climate Change was quite clear to all with February 2016 reported as the hottest month ever recorded globally. He further assured KEFRI and NEMA of support from the County Government during Project implementation. Mr. Kereku invited the Sub-County Commissioner to make his remarks and officially launch the Project.



Dr. Gabriel Muturi (right) delivering his remarks. Seated (left to right) is Messrs B. Muriuki, S. Atundonyang, Dr. Kigomo, Mr. Kereku and Ms. Wanagari Kirumba



Mr. Shadrack Atudonyang Deputy Sub-County Commissioner addressing workshop participants

2.0 Session 2:

Official Launch of the Project by Loitokitok Sub-County Commissioner

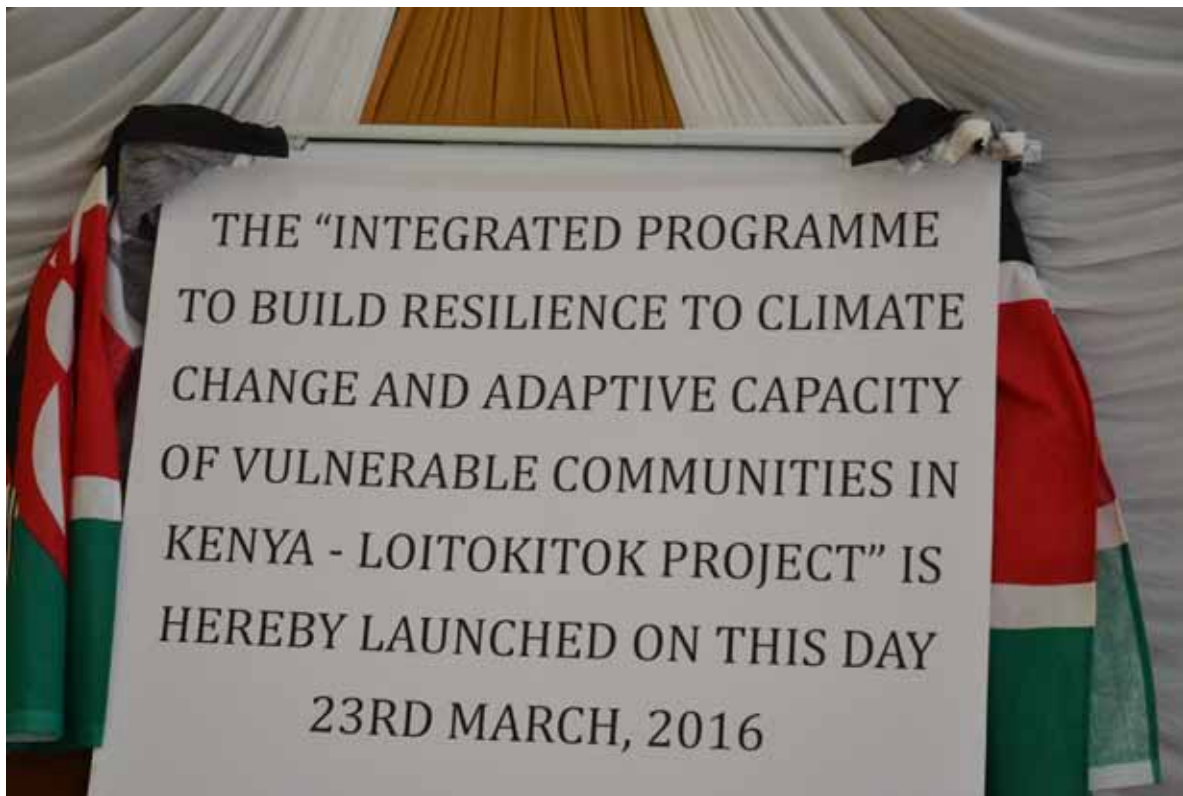
Mr. Shadrack Atudonyang Deputy Sub-County Commissioner of Central Ward

Mr. Shadrack Atudonyang Deputy Sub-County Commissioner of Central Ward conveyed apologies from the Sub County Commissioner who was unable to attend in person due to an impromptu security meeting.

The Deputy Sub-County Commissioner informed the workshop that climate change was real and there was direct correlation between climate change and insecurity. He noted that climate change and its impacts were part of the daily ordinary life of people in Loiktoktoki rather than abstract phenomena. He highlighted conflicts over water and fodder, household quarrels and human-wildlife conflicts as some of the daily issues exacerbated by climate change in the Sub-County. Mr. Atudonyang further informed the workshop that he felt honoured and blessed that his tenure at Loiktoktoki had coincided with commencement of the Programme as well as the Project in Loiktoktoki that would be of great benefit to residents of the Sub-County. However, he cautioned that the Project should be characterised by more actions than words noting that while people celebrate the launch of the Project, they should be ready to cope with challenges of implementing the Project.

Mr. Atudonyang assured participants that Loiktoktoki offered a conducive environment for the Project as the National and County governments work as a team for well being of the people of Loiktoktoki. The Deputy Sub-County Commissioner assured KEFRI and NEMA of full support of the Sub-County Commissioner's office in mobilising communities to play their role in the Project as success of the Project will largely depend on goodwill and positive contribution of the people at the grassroots.

The Deputy Sub-County Commissioner pronounced the launching of the Loiktoktoki project and unveiled a placard to mark the occasion of formal launching of the Project.



Placard bearing the inscription of the launched Programme in Loiktoktoki Sub-County



Ms. Wangari Kirumba (left), Dr. Kigomo and Mr. Atudonyang soon after launching the programme



Project launch workshop participants

3.0 Session 3:

Workshop Presentations and Discussion

Chair Dr. Ebby Chagala-Odera, Deputy Director, Technical Support Services - KEFRI

3.1 Overview of Integrated Programme to Build Resilience to Climate Change and Adaptive Capacity of Vulnerable Communities in Kenya, Betty Prissy Njoki - KEFRI

Ms Betty Prissy Njoki provided a background that has culminated in the Loiktoktoki Project. She highlighted the creation of The Adaptation Fund (AF) by the Kyoto Protocol, a fund which supports international, regional and national entities implement projects for adapting to climate change. The Adaptation Fund works through Designated Authority (in Kenya, Ministry of Environment, Natural Resources and Regional Development Authorities) while projects are presented to the fund through a National Implementation Entity (in Kenya, NEMA). NEMA called for proposals on adaptation to climate change in 2012 and 101 proposals were submitted. NEMA vetted the proposals and 11 out of the 101 were shortlisted for consolidating into one country initiative. NEMA coordinated the amalgamation of the 11 proposals to the current Integrated Programme to Build Resilience to Climate Change and Adaptive Capacity of Vulnerable Communities in Kenya with a budget of USD 9,998,302. The 11 entities have particular activities that they will implement to contribute to meeting objectives of the Programme. The expected outputs and outcomes for respective project components were also presented.

Ms Betty Njoki emphasized that the Programme and projects should be implemented in line with AF requirements namely: participatory approach; gender mainstreaming focusing on women and youth; and partnership. The Programme will be executed in 3 regions, Coast, Eastern, and Western in a number of counties. As the Programme will be implemented using Government of Kenya model, and granted that some of the implementing entities are NGOs, 3 Government of Kenya entities will be in charge of coordinating implementation of the Programme in the regions as executing entities (EE). KEFRI will be in charge of Western region with a coordination role over the sub executing entities (SEE) namely World Vision, VIRED, Kenyatta University, and NASARU.

The Programme recognises that climate change and climate variability pose major threats to the environment, economic growth and sustainable development. Negative effects of climate change experienced in Kenya include; reduced agricultural production, food insecurity, increased incidences of flooding and droughts, widespread disease epidemics, and increased risk of conflict over scarce land and water resources.

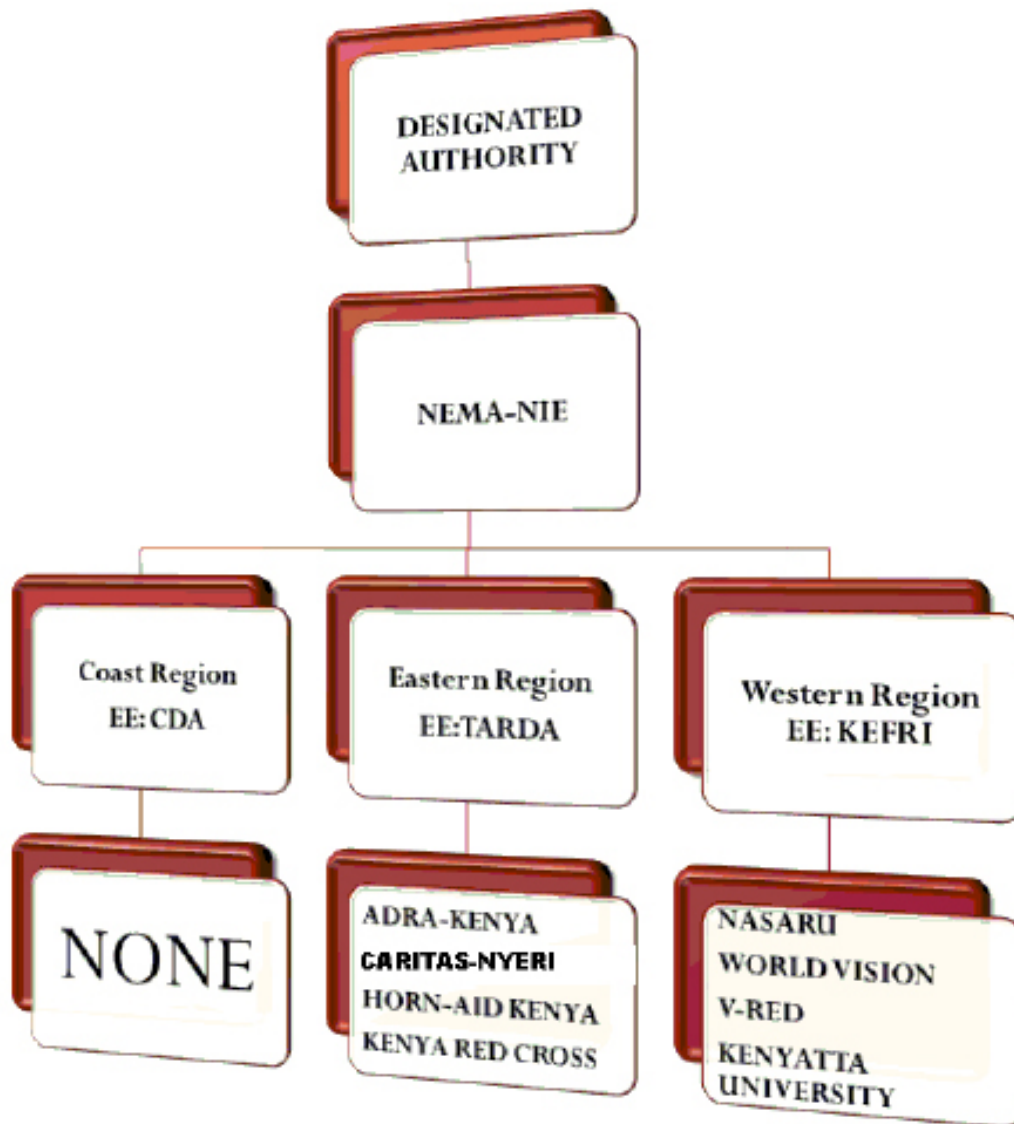


Figure 1: Structure of the Integrated Programme to Build Resilience to Climate Change and Adaptive Capacity of Vulnerable Communities in Kenya

Negative effects of climate change are aggravated by environmental degradation, illegal encroachments, unsustainable livestock grazing, destruction of environment to meet livelihood needs due to lack of alternative sources of income, under-representation of women, youth and marginalized groups in development, and conflicts in management and conservation of forests.

To build resilience to climate change and adaptive capacity of vulnerable communities in Kenya, the Programme has the following objectives.

- I. Enhancing climate change resilient agricultural, agro-forestry, pastoral and agro-pastoral production systems to improve food security in selected counties in Kenya
- II. Improving climate change resilient water management systems to enhance food security in selected counties in Kenya
- III. Increasing resilience to effects of rise in sea level and shoreline changes through mangrove ecosystem management at Vanga and Gazi in the coastal region of Kenya
- IV. Reducing disaster risk among targeted vulnerable communities for climate related risks in Kenya
- V. Strengthening institutional capacity, knowledge management, awareness raising and promotion of adaptation mechanisms to improve resilience to climate change for selected vulnerable communities in Kenya

KEFRI Adaptation Fund component will operate in Loiktoktoki Sub-County. The Project activities will target: mixed community groups of men, women and youth; women groups; and youth groups. KEFRI will partner with other institutions including NEMA, KFS, County Government of Kajiado and Loiktoktoki Sub County, Ministry of Agriculture Livestock and Fisheries, KALRO, Ministry of Water, Ministry of Gender and Youth Affairs, WRMA, and CBOs.

3.2 Proposed Programme activities in Loiktoktoki Sub-County (Loiktoktoki Project) from April to September 2016

Dr. Gabriel Muturi

Dr Gabriel Muturi briefly informed the workshop on KEFRI's geographical coverage in Kenya emphasising that a number of stations generate forestry technologies that would be of benefit to the Loiktoktoki Project. He informed participants that workplans to be implemented in the first two quarters had been proposed without full participation from grassroots as the workplans had been urgently prepared to meet Government budgeting and planning requirements. However, KEFRI had developed program operationalization framework with the NIE (NEMA) and also undertaken field consultations in Loiktoktoki to better inform execution of proposed workplans (Table 2). KEFRI was also keen to establish appropriate framework for field engagement. Dr Muturi emphasised the need to have impact from implementation of the Project and have communities benefiting from the Project not only during project implementation but long after the Project. He also pointed out that implementation of some Project activities for example building of water pans if not properly planned and executed could be associated with negative environmental impacts. For such activities, environmental impact assessments will be done to ensure that any anticipated negative impact is properly mitigated.

Table 2: Proposed workplans for first and second quarters

Component	Output	Activity	First Quarter	Second Quarter +
1: Enhancing Climate Change Resilience for Improved Food Security in Loikotoktoki Sub-County	1.1 Increased adoption of drought tolerant food crops and high value crops	Participatory prioritization of drought tolerant food crops to be acquired	✓	
		Establish learning demo plots on drylands crop husbandry	✓	
		Undertake trainings on crop husbandry		
		Procurement and distribution of 15,000 kg of drought tolerant food crops		✓
	1.2 Diversified alternative livelihood sources	Identify community members to be trained and supported on fruit and other trees nurseries (16)	✓	
		Participatory prioritization of grafted seedlings requirements	✓	
		1,700 grafted mangoes and 1,700 citrus grafts produced and supplied to farmers		✓
		Undertake trainings on grafting		✓
		Tending of grafts		
		Distribution of grafted seedlings to farmers		✓

Component	Output	Activity	First Quarter	Second Quarter
	1.3 Selected farmer groups / farmers supported with drip irrigation kits for efficient water use	Identify farmer groups/ farmers with capacity to engage in drip irrigation	✓	
		Train on drip kit management and maintenance	✓	
		Install 95 drip irrigation kits		
		Train on drip kit management and maintenance	✓	
	1.5 100,000 seedlings planted to rehabilitate livestock watering points and riparian ecosystems	Identify and map degraded areas/ hotspot	✓	
		Conduct 3 participatory training on rehabilitation techniques and develop	✓	
		Plant 45,000 tree seedlings in selected animal watering points		✓
		Train farmers on pastoral and agro pastoral ecosystems based adaptation		✓
2. Improving climate resilient water management	2.1 Appropriate physical assets and infrastructure for water harvesting, storage and irrigation established	Community sensitization in water pans establishment and site selection	✓	
		Hold awareness creation meetings for groups on water harvesting, storage and utilization		✓
		Design water pans including B/Qs		✓
		Undertake EIA for water pans establishment		✓

Component	Output	Activity	First Quarter	Second Quarter +
Strengthening capacity and knowledge management for Program Implementation and Climate change adaptation	5.1 Information management system for documenting program implementation processes and best practices/lessons learnt established (KEFRI & NEMA)	Establish and maintain a web based information system for the program	✓	
		Develop a Program Communication and visibility strategy	✓	
	5.3 Awareness and sensitization on climate change adaptation created	Create awareness on climate change, impacts and adaptation: through Radio program (local language and Kiswahili) and in public meetings		✓

On project management, coordination and M&E, Dr. Muturi informed the workshop that the Project was entrenched within KEFRI structure and KEFRI had established its management team as well as a technical implementation committee. Implementers are expected to factor Project activities in their annual performance contracts. The technical implementation committee and implementers are expected to in future work closely with the proposed Project Site Steering Committee in development of workplans.

3.3 Plenary discussion

The session chair Dr. Ebby Chagala-Odera opened the plenary discussion by recapping the key issues that had been presented in the workshop. She opened the floor to the plenary for feedback. Workshop participants asked questions while some shared their views on different aspects of the Project. The questions, answers and comments are captured in Table 3a and 3b.

Table 3a: Plenary discussion - Questions and Responses

	Participant and affiliation	Question	Response
1	John Ntipapai Community Development Worker – Kimana Ward	Why is the Ministry of Youth and Gender not represented in the Workshop yet the implementation mechanism will target the Youth and Gender	The Ministry has been involved in the project development phase and is recognised as a Partner.
2	John Ntipapai Community Development Worker – Kimana Ward	We sometimes back benefited from training on fodder growing and banking. We were to be supported to establish a demonstration unit in each ward which has not materialised. Are we to expect the same promises and no action from this Project?	The training received will be an opportunity to be used by the Project as it means that the Project will not use resources and time to build capacity rather it will expend effort on actual establishment of fodder banks and build on past experiences.
3	James Narba – Noomaiyant Community Group - Kimana Ward	The Project alludes to roles of CBOs. Will there be MoUs with CBOs and will the CBOs be able to draw budgets?	The Project will facilitate activities following the laid down Government procedures that governs use of public resources.
4	Leonard Nemushai – Chairman, Namaiyani CBO	Sorghum / Millets do well in Loitokitok but have no markets, how will the Project assist when it promotes their cultivation?	The Project proposes value chain approach and hence marketing will also be a focus of the Project to link the crops to potential markets.
5	Leonard Nemushai – Chairman, Namaiyani CBO	How will the Project deal with threats of elephants while promoting growing of mangoes since the crop is one of the most preferred foods by elephants?	Mangoes will be introduced in areas that are not afflicted by elephant menace. In principle, appropriate interventions will be introduced in appropriate locations through consultations with beneficiaries.
6	Solomon Kereku – Sub County Administrator	While appreciating involvement of County Government at the Sub-county level, have the relevant Ministries at the County been sensitised to avoid duplication of activities?	Kajiado County has two Projects under the Programme. It had been planned that the two Projects do one launch at County headquarters (Kajiado) involving the County Government but this was shelved as it would have drawn fewer participants from the target communities. The urgency to roll out activities also delayed the planned meeting with County Government officials at Kajiado. However, the need to sensitise the officials at Kajiado is appreciated and it will be done as soon as possible. The NIE Programme Coordinator (Ms Wangari) further clarified that the Chairman, Council of Governors office has been sensitised about the Programme and Projects and had participated in the Programmes national launch.

	Participant and affiliation	Question	Response
7	Emanuel Mayiani Secretary Loitokitok CFA	How do we recover for lost time granted that according to presented workplans, quarter 1 has ended without implementing any activities?	The NIE Programme Coordinator (Ms Wangari) clarified that no time had been lost as the inception workshop marked the official beginning (day 1) of the Project implementation in Loitokitok.
8	Benjamin Muindi – KFS	Is there a calendar of activities to implement the workplans	KEFRI scientists will visit Loitokitok from 4 th April to make contact with implementers on the ground and to agree on the action plans and calendar of events. The scientists have been sensitised on the importance of liaising with focal department heads at Loitokitok Sub-County.
9	Milka Teina – Engolb S. H. Group - Rombo Ward	In Rombo ward, women cut trees to make charcoal to eke out a living. How can the Project assist in alternative ways of making charcoal without cutting trees or alternative livelihoods sources?	Issues of efficient methods of making charcoal are part of the Project activities as well as promotion of energy saving stoves. There are also activities that will be promoted for livelihood improvement such as planting of fruit trees, hay/fodder processing and sale, and establishment of tree nurseries.
10	Milka Teina – Engolb S. H. Group - Rombo Ward	In Rombo ward, women trek long distances to fetch water. How will the Project assist?	The project has a component of water harvesting and conservation

Table 3b: Plenary discussion - Comments

	Participant and affiliation	Comment	Reaction from presenters
1	John Ntipapai Community Development Worker – Kimana Ward	<p>We look forward to the implementation of the Project but would like to point out that:</p> <ul style="list-style-type: none"> • For the Project to succeed, it is important to involve communities at the grass-root and respond to their needs. • The drought tolerant food crops that the Project intends to promote should be those that the communities value rather than imposing the crops on the people • However, in case of introducing new crops, the Project should be aware that change takes time 	<p>The Project implementation will be participatory to ensure that it responds to real issues and needs of beneficiaries.</p> <p>It is correct that change takes long and patience is required. It should therefore be appreciated that Projects sometimes are unable to cause the complete change but whatever they do contribute to causing the change by building on previous results of other projects.</p>
2	Emanuel Mayiani Secretary Loitokitok CFA	<p>Our CFA draws membership from all wards that border Loitokitok forest and partners with KFS in protecting the forest. We appreciate NEMA and KEFRI for the Programme and pledge our support to ensure the Project succeeds.</p>	
8	Joseph Maina WRMA	<p>Flooding is a serious problem in the County and it would be advisable to have activities under component 4 (Reducing Disaster risk among targeted vulnerable communities for climate related risks in Kenya)</p>	<p>The priority under component 4 was given to areas affected by flooding of river Nyando. However, it is noted that flooding in Loitokitok is an issue that should be considered in subsequent phases of the Programme. But even under the current Project, there are activities that will be relevant to flood and siltation control such as planting of bamboo for river bank protection, desilting of water pans, and planting of trees on degradation hot spots.</p>
9	Isaac Kirima – Loitokitok agribusiness Farmer CBO	<p>Our group is interested in growing mangoes. The Project should prioritise and leverage on planting of fruit trees for environmental conservation as people are reluctant to cut fruit trees due to the continuous benefit of harvesting fruits. Our group pledges support to the Project and are ready to participate in implementation of applicable activities.</p>	<p>The group makes a good opportunity for promotion of grafted mangoes that is part of the Project activities. It is clear that different activities could be suited for different places granted that promotion of mangoes might not work in areas of Loitokitok afflicted by wildlife menace but would be suitable in parts of Loitokitok where there is no elephant threat.</p>

	Participant and affiliation	Question	Response
10	Jonathan M. Miliari – Elangata Enkima Group Ranch	Where Project activities are to be implemented in group ranches, it is important the Project involves leaders of group ranches to get their goodwill and for easy access to land under the management of the group ranches	Further, implementers must appreciate the land tenure system which could determine feasible Project interventions.
11	Emanuel Mayiani Secretary Loitokitok CFA	The persons attending the workshop should also take responsibility of promoting the cause of the Project to other people and groups that were not in attendance.	
12	Peter Mainthya Keseni Kwaboya Upendo Self Help Group	We congratulate NEMA and KEFRI for the Project. When water pans are built for irrigation purpose, their security should be considered as there can be conflict between use of the water pan for agriculture and use of the same for watering animals.	
13	Peter Mainthya Keseni Kwaboya Upendo Self Help Group	The Project should assist in providing appropriate trees and fruit seeds such as for passion and drip irrigation kits	
14	Kitheka – Elephant and People	Wildlife – Human conflict would reduce if rainfall was to increase as has been witnessed recently where fewer conflicts were witnessed due to good rains.	
15	Sakimba Sienitei Saw millers representative	Incidences of rivers drying are increasing in Loitokitok allegedly due to over cutting of trees. Flooding and soil erosion is increasing and the Project should consider building water retention dams and soil conservation structures	
16	Benson Ngigi – MoAF&L	The Project should consider embracing the recommendations of the Amboseli Ecosystem Management Plan that was submitted to NEMA for approval	
17	Paul Ole Siepai Chairman - Kisyoki Canal and Irrigation Self Help Group	In Rombo where our group is, the Project will have easier access to land as land is individually owned. But where land is under group ranches, it will be important to consult with group ranch leaders.	
18	Paul Ole Siepai Chairman - Kisyoki Canal and Irrigation Self Help Group	We need to be assisted with a solution to the problem of drying of acacia seedlings at the springs that is inhibiting natural regeneration and to be provided with alternative seedlings to plant in our spring areas	

4.0 Session 4:

Appointment of Project Site Steering Committee

Gabriel Muturi, Deputy Director, Project Focal Officer at KEFRI

The National Implementation Entity NEMA, requires that the inception workshop discuss formation of a field level committee and a list of nominated members generated. Dr Muturi presented the proposed terms of reference and membership of the committee for Loiktoktoki Project as follows:

Terms of Reference

1. Review proposed quarterly workplans for adequacy and recommend appropriate changes
2. Link KEFRI and other agencies staff to appropriate project sites and provide liaison with community members during implementation
3. Assess effectiveness of implemented activities and recommend appropriate measure to enhance effectiveness and efficiency
4. Ensure project publicity and visibility
5. Undertake any other relevant role that might arise during the execution of the project
6. Meet monthly and quarterly and make reports to the KEFRI Project Focal Officer

Membership

1. Sub-County Commissioner
2. Sub-County Administrator
3. Sub-County Agricultural Officer
4. Sub-County Forest Officer
5. Sub-County Water Officer
6. Community Representative – Kuku Ward
7. Community Representative – Rombo Ward
8. Community Representative – Kimana Ward
9. Community Representative – Imbirikani Ward
10. Community Representative – Entoinet Ward

After presentation, the plenary held a brainstorming session and a consensus was reached on the following issues:

- Appointment of the committee would be done by workshop participants except those from NEMA and KEFRI
- Membership would be expanded to have two representatives of each ward
- However, the committee should be lean for logistic purpose, decision making and effective discharge of its function
- Representatives for wards would be two, with one from each gender
- Membership of the committee would be expanded to include representative from; NEMA, WRMA, Ministry of Livestock, Ministry of Youth and Gender and Chairperson of Group Ranches

5.0 **Session 5:** **Closing Session**

Chair Dr. Ebbay Chagala-Odera, Deputy Director, Training and Technical Services - KEFRI

Closing Remarks

In his closing remarks, Mr. Solomon Kereku, Loiktoktoki Sub-County Administrator noted that the workshop whose aim was to sensitize stakeholders on the Adaptation Fund Programme and engage community representatives had been successful. He added that interaction had brought up diverse experiences from various stakeholders to shape implementation of the project. For instance pros and cons of introducing some technologies such as mango trees which are prone to destruction by elephants in some regions had been shared. Mr. Kereku advised those elected in the Project Site Steering Committee to serve interest of people at the grassroots and to demonstrate integrity, reliability and dedication as they discharge their function.

Dr. Bernard Kigomo, Senior Deputy Director KEFRI in his closing remarks appreciated the cultural diversity, effective structures and team work which make Loiktoktoki Sub – County unique. He noted that the workshop had added valuable inputs on how the Project should be implemented. He also appreciated the Project ownership that had been demonstrated by all implementers including; communities, CBOs, local and national government highlighting that project ownership will be crucial for success of the project. He assured stakeholders that KEFRI the core implementing institution, will craft a detailed roadmap that would serialize detailed work plan to ensure smooth implementation of the project activities commencing April 2016.

The Workshop was adjourned with a vote of thanks from Dr. James Kimondo (KEFRI) who appreciated the presence and speeches from the main guests, clear presentations from presenters, and informative plenary feedback from all participants. He also appreciated the role played by workshop organizers and hotel staff in making the workshop a success.



Part of the participants who attended the workshop listening to proceedings



Ms. Milka Teina - Community representative



Dr. Bernard Kigomo (left) together with Mr. Solomon Kereku and Dr. Ebby Chagala-Odera during the closing session



Dr. James Kimondo giving a vote of thanks on behalf of KEFRI Director

6.0 Appendices

Appendix I: Program

Time	Topic	Facilitator
8.30 – 9.00 am	Registration	<ul style="list-style-type: none"> • Ms Joyce Chege
9.00 – 9.15 am	Preliminaries Workshop Objectives	<ul style="list-style-type: none"> • Mr. B. K. Muriuki • Dr. Gabriel Muturi
9.15-9.40 am	Opening Remarks <ul style="list-style-type: none"> • KEFRI – Director KEFRI • NEMA – Director NEMA • Loitokitok Sub-County Administrator 	<ul style="list-style-type: none"> • Dr. Ben Chikamai • Prof. Wahungu • Mr. Solomon Kereku
9.45 – 10.00 am	Project Launch By County Commissioner – Loitokitok Sub-county Commissioner	<ul style="list-style-type: none"> • Mr. J.R Ole Kikua
10.00-10.30am	Tea Break	
Presentations <i>Session Chair Dr. Ebby Chagala-Odera</i>		
10.30-11.00 am	Overview of Kenya Climate Adaptation Fund Programme	<ul style="list-style-type: none"> • Ms Betty Prissy Njoki
11.30- 11.45 am	Quarter 1 and Quarter 2 Project activities in Loitokitok sub-county	<ul style="list-style-type: none"> • Dr. Gabriel Muturi
11.45-12.30 pm	Plenary discussion	<ul style="list-style-type: none"> • Session Chair
12.30- 12.45 pm	Appointment of Project Steering Committee	<ul style="list-style-type: none"> • Dr. Gabriel Muturi
12.45 – 1.00 pm	Closing Remarks – Senior Deputy Director R&D, KEFRI Loitokitok Sub-County Administrator	<ul style="list-style-type: none"> • Dr. Bernard Kigomo • Mr. Solomon Kereku
1.00 – 1.05 pm	Vote of Thanks	<ul style="list-style-type: none"> • Dr. James Kimondo
1.05-2.00 pm	Lunch and Departure	

Appendix II: List of Workshop Participants

No.	Name	Institution	Email Address
1	Shadrack Atudonyang	Ministry of Interior – Central Ward Deputy County Commissioner	shaddatudo@yahoo.com
2	Solomon Kereku	Kajiado County Government – Loitokitok Sub-County Administrator	Solomonkereku@yahoo.com
3	Bernard Kigomo	Senior Deputy / Research and Development Director, KEFRI	bkigomo@kefri.org
4	Wangari Kirumba	National Implementation Entity Focal Point - NEMA	wkirumba@nema.go.ke
5	Ebby Chagala - Odera	Deputy Director – TSS, KEFRI	chagala@kefri.org
6	Gabriel Muturi	Deputy Director – BEM, & KEFRI Project Focal Officer	gabrielmukuria2012@gmail.com
7	Ely Mwanza	KEFRI – Regional Director, CHERP	elymwanza2002@yahoo.com
8	James Kimondo	KEFRI – Regional Director, Forest Products Research Centre – Karura	jmkimondo59@yahoo.co.uk
9	Leonard Nemushai	Namaiyani CBO	lemoshai@yahoo.com
10	Stephen Gitonga	KEFRI HQ	stevegitonga@yahoo.com
11	Benjamin Pareno	KFS-Oloitokitok Station	parenobk@gmail.com
12	Paul Njogu	CFA Loitokitok	paulnjogu@gmail.com
13	Emanuel Mayiani	Secretary CFA Loitokitok	emayiani@yahoo.com
14	Tom Mathinji	KBC	tmattinji@gmail.com
15	Benjamin Muindi	KFS	bmuindi@kenyaforestservice.org
16	Mpurruny Mutarin	Matepes Women S H Group	-
17	David Mwangi	NEMA HQ	dmwangi@nema.go.ke
18	Anthony Mwangi	NEMA HQ	Amwangi@nema.go.ke
19	James Narba	NCPO	jameskeme@yahoo.co.uk
20	Betty Prissy Njoki	KEFRI Hqs	bettyprissy@yahoo.com
21	Miriam Kago	KEFRI Hqs	mwanguikago@yahoo.com
23	B.K. Muriuki	SCAO - Loitokitok	-
24	Isaac Lenkon	Reporter Mayian	i220lenkou@gmail.com
25	Stanley Oloputari	MOALF	soloputani@yahoo.com
26	Esther Solonka	MOALF	sopiyio@gmail.com
27	Patrick Kiminta	Radio citizen	pkiminta@gmail.com
28	Peter Mainthya Keseni	Kwaboya Upendo SH Group	-
29	Bjorn Zakayo	MOA	zudandep@yahoo.com
30	Benson Ngigi	MOALF	daoloitokitok@gmail.com
31	Tipape Ole Ipite	K.W.A Rombo	-
32	Ernest Njocholo	MOALF	nestastevens@gmail.com
33	Milka Teina	Engolb SHG, Rombo ward	-
34	Jonathan M. Miliari	Elangata Enkima	-
35	Anwami Ben	DRSRS/NEMA	-
36	Sophy M. Ntoyai	CFA Loitokitok	naretoi.shokut@gmail.com
37	Jamae M. Moishi	SHA Loitokitok	-

No.	Name	Institution	Email Address
38	Joseph Maina	WRMA	jophmaina08@yahoo.com
39	Isaiah Samana	Chief, Kuku Ward	-
40	Josphat Macharia	MOALF	josmwangi@gmail.com
41	Naphtally Chege	MOALF	chephtally@yahoo.com
42	Benson Wanyoike	MOALF	wanyoikeb@yahoo.com
43	Isaac Kirima	Loitokitok Agribusiness Farmer CBO	isaackirima@gmail.com
44	Joyce M. Chege	KEFRI Hqs	drylandforestry@gmail.com
45	Jacinta Kanini	Rombo Ward	-
46	Zablon Musumba	KEFRI Hqs	zablinalwalamusumba@gmail.com
47	Bernard M. Kamondo	KEFRI - CHERP	kamondobernard@gmail.com
48	Sakimba Sienitei	Siosion Sawmillers	-
49	Paul Ole Siepai	Rombo Ward	-
50	David Mposho	EPA Entenet	-
51	Godfrey Senkai	Imbaraki Ward	-
52	Patrick Mutuku	Kimana Ward	-
53	Phoda Bilisi	Kuku Ward	-
54	John Ntipapai	Kamana Ward	-

Appedix III: NEMA Director General Remarks

TALKING NOTES FOR THE NEMA DIRECTOR GENERAL, PROF.GEOFFREY WAHUNGU DURING THE LAUNCH OF KENYA CLIMATE CHANGE ADAPTATION PROGRAMME KEFRI COMPONENT AT NTAUOH HOTEL, OLOITOKITOK ON 23RD MARCH 2016

The Chief Guests, Deputy County Commissioner and Oloiktoktoki Sub-County Administrator,
Senior Deputy Director KEFRI,
Other distinguished guests
Members of media
Ladies and Gentlemen

It gives me great pleasure to welcome you all to the launch of KEFRI's Component of Integrated Programme to Build Resilience to Climate Change and Adaptive Capacity of Vulnerable Communities in Kenya, otherwise referred to as the 'Kenya Adaption Fund Programme'. This is part of a one billion climate change programme funded from the Adaptation Fund Kitty, which NEMA secured on behalf of Kenya.

NEMA is proud to participate in this launch, which is a celebration of one of the achievements of KEFRI towards addressing climate change in Kenya. I am happy to inform you that this launch also marks the commencement of implementation of the Programme.

I note with delight KEFRI's commitment and contribution towards creating resilience in the subcounty of Oloiktoktoki. I confirm to you that this Programme Component will deliver the following key climate change resilience output and outcomes.

Under the output of

- a) **Enhancing climate change resilience for improved food security in selected counties**
 - 1. Increased adoption of drought tolerant food crops and high value crops,
 - 2. Enhanced efficient and food utilization through implementation of post harvest strategies and value chain approach,
 - 3. Diversified alternative livelihood sources,
 - 4. Increased food production through appropriate and efficient irrigation methods,
 - 5. Enhanced land productivity through ecological land use systems, conservation strategies and management technologies.

- b) **Improving climate resilient water management systems to enhance food security in selected counties**
 - 1. Established appropriate physical assets and infrastructure for water harvesting, storage and irrigation.

- c) **Strengthening capacity for Programme implementation and climate change adaptation**
1. Strengthening capacity and knowledge management for Programme implementation and climate change adaptation,
 2. Knowledge generation and dissemination.

I now wish to share with you the journey NEMA and other institutions like KEFRI has travelled that got us to this day.

NEMA Nomination

The Ministry of Environment, Natural Resources, and Regional Development Authorities is the focal point and the designated authority for the Adaptation Fund in Kenya. As the designated authority, the Ministry nominated National Environment Management Authority (NEMA) to be evaluated as the National Implementing Entity (NIE) for Kenya.

Accreditation journey

NEMA was subjected to a rigorous evaluation after which it obtained its accreditation as Kenya's National Implementing Entity. NEMA regards this accreditation as highly prestigious and honourable recognition. The key evaluation criteria was on: financial integrity institutional capacity, transparency and competence to deal with financial mismanagement and other forms of malpractices. This accreditation serves as proof of competence, efficiency and trustworthiness of NEMA at international level.

Programme design

NEMA, in executing this function, developed a climate change programme through a public engagement process. NIE made a public call for proposals through a media advert and a total of hundred and one (101) proposals were received. NEMA developed a review criterion which was used to vet the 101 proposals which resulted to selection of 11 of these projects.

The Programme components

The targeted thematic areas are improving food production, construction and management of water harvesting structures, construction of flood control structure and reducing coastal erosion and enhancing mangrove biodiversity.

KEFRIs role as a main EE

I wish now to LET YOU KNOW THAT BEYOND THE PROJECT THAT KEFRI will be implementing here at Loiktoktoki, KEFRI HAS THE RESPONSIBILITY OF coordinating activities of 4 other institutions under this Programme. This coordination role includes subcontracting these institutions for implementation purposes, timely fund disbursement, quarterly reporting, planning and monitoring and evaluation.

These four organizations are:

1. Kenyatta University
2. VIRED International
3. Nasaru Women Group
4. World Vision Kenya

with a total budget of USD 4,283,664.04. This is equivalent to Ksh 428 million. This is nearly half of the funding for Adaptation Fund Programme in Kenya and our expectations on KEFRI as a key driver of this process is therefore very high.

NEMA also wishes to confirm to you existence of requisite capacities at KEFRI to deliver this Programme and is very confident that the desired outcomes will be achieved.

In conclusion,

NEMA is proud of KEFRI and the entire management of KEFRI and specifically Dr. Muturi, and Madam Betty Njoki for this very important achievement and looks forward to working together and with communities of Oloiktoktoki to deliver aspirations of the Adaptation Fund and more importantly aspirations of the targeted communities in ASALs of this Sub-County.

Thank you.




Appendix IV: Power point presentations

Presentation 1 Integrated Programme to Build Resilience to Climate Change and Adaptive Capacity of Vulnerable Communities in Kenya - Betty Prissy Njoki

INTEGRATED PROGRAMME TO BUILD RESILIENCE TO CLIMATE CHANGE & ADAPTIVE CAPACITY OF VULNERABLE COMMUNITIES IN KENYA

PROJECT INCEPTION WORKSHOP AT LOITOKITOK:
23/3/2016

PRESENTER: BETTY PRISSY NJOKI(KEFRI-RMO)



The Process-background

At the third session of the Conference of the Parties serving as the meeting of the Parties to the Kyoto Protocol (CMP), which was held in Bali, Indonesia from 3-14 December 2007, Parties in decision [1/CMP.3](#) decided to establish the Adaptation Fund Board (AFB) as the operating entity to supervise and manage the Adaptation Fund, under the authority and guidance of the CMP.

To apply for funding, countries must submit proposals through an accredited institution.

- Kyoto Protocol Parties that are eligible to apply for funding must use either a [National Implementing Entity](#) (NIE), a [Regional Implementing Entity](#) (RIE), or a [Multilateral Implementing Entity](#) (MIE) to access the Adaptation Fund.
- In order to become accredited, entities are required to meet the legal and fiduciary standards adopted by the Board as detailed in the [Operational Policies and Guidelines](#).
- Accreditation of institutions must be ratified by a Designated Authority in a country

The Process-background

“Designated Authorities” are government officials who act as points of contact for the Adaptation Fund.

- On behalf of their national governments, the designated authorities endorse:
- a) the accreditation applications of National or Regional Implementing Entities before they are sent to the fund's secretariat for assessment
- and/or
- b) proposals by National, Regional, OR Multilateral Implementing Entities for adaptation projects and programmes in the DA's country.
- THE DA for the Kenya Process is PS-MINISTRY OF ENVIRONMENT

Introduction

- NEMA is accredited National Implementing Entity [NIE] by Adaptation Fund Board to administer funds on adaptation to climate change.
- In December 2012, NEMA called for proposals covering four components worth USD 10 million
- Over 100 proposals were submitted
- Top 10+1 were selected for further vetting
- The 11 are:
 1. KEFRI
 2. TARDA
 3. KENYA RED CROSS
 4. KENYATTA UNIVERSITY
 5. V-RED-KENYA
 6. COAST DEVELOPMENT AUTHORITY
 7. NASARU WOMEN GROUP
 8. CARITUS-KENYA NYERI CHAPTER
 9. WORLD VISION
 10. HORN-AID KENYA
 11. ADRA-KENYA

Intro cont:

- The total program cost is USD 9,998,302.00.
- The 11 are categorized into 3 main Regions (Eastern, Western and Coast Regions)
- Each region has a coordinating institution Known as Executing Entity (EE) in the AFB context
- The EE has a main role of facilitating and coordinating the other institutions under it Known as Sub Executing Entities (Sub-EEs) in wide consultations with NIE.
- *See below diagram*
- WESTERN REGION contract is worth USD 4,616,185 and KEFRI will implement around **USD 2,000,000...**
- **NOTABLE IS THAT Each EE and Sub-EE has a defined project with set of activities that target a certain area and is responsible for implementing that defined project**
- KEFRI proposal target is Loitokitok in Kajiado South.

Structure



Program Outlook

Terms	Description
Programme title	Integrated Programme To Build Resilience To Climate Change & Adaptive Capacity Of Vulnerable Communities In Kenya
Sectors of Focus:	<ol style="list-style-type: none"> 1. Agriculture & Food security; 2. Water management, 3. Disaster Risk and Reduction (DRR) 4. Coastal Management
Programme Duration	3 years 2016-2018
Area of coverage	Kenya in general/Countries Including Kajiado County; Loitokitok Sub county and its 6 wards

Rationale

- Climate change and climate variability pose major threats to the environment, economic growth and sustainable development.
- The negative effects from Climate Change experienced in Kenya include reduced:
 - Low agricultural production,
 - food insecurity,
 - increased incidences of flooding and droughts,
 - widespread disease epidemics, and
 - increased risk of conflict over scarce land and water resources.
 - Rise of sea level –coastal region

Compounded by contd...

These impacts of climate change are further compounded by

1. Local **environmental degradation**,
 - ❖ **deforestation**
 - ❖ Land and tree tenure, and competing land uses, and changing community land to commercial use.
 - ❖ Hardy & indigenous species cleared
 - ❖ Inadequate individual commitments in planting and growing trees
2. **Illegal encroachments**,
3. **Unsustainable livestock grazing**.
4. Lack of alternative sources of income livelihoods hence exploitative businesses like charcoaling
5. Under representation of women, youth and marginalized groups in development
6. Conflicts in management and conservation of forests



Objectives of the Program Proposal

The program is development oriented demanding for applied research

1. Enhancing Climate resilient agricultural, agro-forestry, pastoral and agro-pastoral production systems to improve food security in selected Counties in Kenya
2. **Improving climate resilient water management systems to enhance food security in selected Counties in Kenya**
3. Increasing resilience to the effects of rise in sea level and shoreline changes through Integrated Shoreline and Mangrove Ecosystem Management at Vanga and Gazi in the Coastal region of Kenya
4. **Reducing Disaster risk among targeted vulnerable communities for climate related risks in Kenya**
5. **Strengthening institutional capacity, knowledge management, awareness raising and promotion of adaptation mechanisms to improve resilience on climate change to selected vulnerable communities in Kenya**

Program Components and outputs

PROJECT/PROGRAM COMPONENTS	EXPECTED CONCRETE OUTPUTS	EXPECTED OUTCOMES
1. Enhancing Climate Change resilience for improved food security in selected Counties	1. Increased adoption of drought tolerant food and high value crops	Enhanced food security and improved livelihoods
	2. Increased food production through appropriate and efficient irrigation methods	
	3. Established value chain system for the introduced crops	
	4. Diversified alternative livelihood sources	
	5. Increased animal production through adoption of drought tolerant fodder	
	6. Enhanced land productivity through ecological land use systems, conservation strategies and management technologies	

PROJECT/PROGRAMME COMPONENTS	EXPECTED CONCRETE OUTPUTS	EXPECTED OUTCOMES
2. Improving climate resilient water management systems to enhance food security in selected Counties	1. Established appropriate physical assets and infrastructure for water harvesting, storage and irrigation	Increased access to water and enhanced food security
3. Increase resilience to the effects of sea level rise and shoreline changes through Integrated Shoreline and Mangrove Ecosystem Management (ISMEM) in Kenyan coastal zone	1. Implemented Integrated Shoreline and Mangrove Ecosystem Management (ISMEM)	Secured human habitation and development
	2. Rehabilitated Mangrove Ecosystem	
	3. Rehabilitated and protected Coral Reefs	
	4. Stabilized shorelines	
	5. Controlled erosion and accretion	
	6. Inventory and GIS database for the shoreline and mangrove ecosystems	

Objects cont:

PROJECT/PROGRAMME COMPONENTS	EXPECTED CONCRETE OUTPUTS	EXPECTED OUTCOMES
4. Disaster risk reduction among vulnerable communities	1. Constructed and equipped Automatic Weather station (AWS) in selected programme site(s)	Improved disaster preparedness and risk reduction
	2. Documented weather information to facilitate decisions on Disaster preparedness and risk reduction	
	3. Increased use of weather information in response to various climate risk disasters	
	4. Established community based friendly weather information dissemination systems	
	5. Constructed flood control structures (dykes) in Nyando wetland basin	Improved flood control Secured human habitation during flood Reduced flood related damages
	6. Constructed modest evacuation centres at selected sites in Nyando wetland Basin	
	7. De-silted canals and river beds in Nyando Basin	
6. Strengthening capacity for program implementation	Knowledge Management system established	Increased knowledge base on climate change adaptation for better

Target areas in Loitokitok

- The project in Loitokitok will cover the 6 Wards: Kimana, Imbirikani, Rombo, Kuku, Central and
- The program activities will target **mixed groups of men, women and youth, women groups and youth groups.**
- Due to the integrated nature of this Program multidisciplinary, multi-dynamic approach will be adopted where various institutions and organs in the National and county government shall play a key role in its implementation.
- These will include but not limited to:
 - NEMA
 - KEPRI
 - KFS
 - County Government of Kajiado and Loitokitok Sub County
 - Ministry of Agriculture and Livestock
 - KALRO
 - Ministry of Water
 - Ministry of gender and youth affairs***
 - WARMA
 - Communities and community groups

Methods

1. Participatory development approaches

- Joint planning and decision making
- Joint implementation, monitoring and evaluation
- Joint impact identification
- Information sharing
- Consultation,

These will be used especially to increase ownership and sustainability and to empower the community members and stakeholders to actively participate and monitor the progress of the activities initiated.

2. Gender mainstreaming:

AFB through NIE gives special attention to gender based CC impacts HENCE NEED TO SPECIFICALLY TARGET youth d women groups

3. Partnerships

KEPRI main stay is forestry research hence for most activities we have to consider partnering with

- Ministry of agriculture
- KFS
- Livestock
- KALRO
- Ministry of Water
- Ministry of energy
- WARMA etc

THANK YOU

Presentation 2: Proposed Programme activities in Loiktoktoki Sub-County (Loiktoktoki Project) from April to September 2016, Dr. Gabriel Muturi .

Activities planned for KCCAP for Quarters 3 & 4 in 2015/16 FY

G.M. Muturi

Planning

- Developed program operationalization framework between NIE and KEFRI
- Undertook field consultations in Loitokitok
- **To establish framework for KEFRI-Field engagement**
- **Impact**

Component 1: Contd.

Output 1.2	Sub-Activities	Quarter	
		3	4+
Diversified alternative livelihood sources	Identify community members to be trained and supported on fruit and other trees nurseries (16)	✓	
	Participatory prioritization of grafted seedlings requirements	✓	
	1,700 grafted mangoes and 1,700 citrus grafts produced and supplied to farmers		✓
	Undertake trainings on grafting		✓
	Tending of grafts		✓
	Distribution of grafted seedlings to farmers		✓

What do we offer in this program?

Technological innovations Acquired from past research and development in drylands of Kenya



Component 1: Enhancing Climate Change Resilience for Improved Food Security in Loitokitok Sub-County

Output 1.1	Sub-Activities	Quarter	
		3	4+
Increased adoption of drought tolerant food crops and high value crops	Participatory prioritization of drought tolerant food crops to be acquired	✓	
	Establish learning demo plots on drylands crop husbandry	✓	
	Undertake trainings on crop husbandry	✓	
	Procurement and distribution of 15,000 kgs of drought tolerant food crops		✓
	Supervision of seed sowing and tending		✓
	Assess performance of planted seed		✓

Component 1: Contd.

Output 1.3	Sub-Activities	Quarter	
		3	4+
Selected farmer groups / farmers supported with drip irrigation kits for efficient water use	Identify farmer groups/farmers with capacity to engage in drip irrigation	✓	
	Train on drip kit management and maintenance		✓
	Install 95 drip irrigation kits		✓
	Train on drip kit management and maintenance		✓

Component 1: Contd.

Output 1.5	Sub-Activities	Quarter	
		3	4+
100,000 seedlings planted to rehabilitate livestock watering points and riparian ecosystems	Identify and map degraded areas/ hotspot	✓	
	Conduct 3 participatory training on rehabilitation techniques and develop community action plans	✓	
	Plant 45,000 tree seedlings in selected animal watering points		✓
Drought and climate resilient varieties of grass, fodder and forage plants promoted	Train farmers on pastoral and agropastoral ecosystems based adaptation		✓

Component 2: Improving climate resilient water management systems to enhance food security in Loitokitok Sub-County.

Output 2.1	Sub-Activities	Quarter	
		3	4+
Appropriate physical assets and infrastructure for water harvesting, storage and irrigation established	Community sensitization in water pans establishment and site selection	✓	
	Hold awareness creation meetings for groups on water harvesting, storage and utilization		✓
	Design water pans including B/Qs		✓
	Undertake EIA for water pans establishment		✓

Component 5: Strengthening capacity and knowledge management for Program Implementation and Climate change adaptation.

Output 5.1	Sub-Activities	Quarter	
		3	4+
Information management system for documenting program implementation processes and best practices/lessons learnt established (KEFRI & NEMA)	Establish and maintain a Web based information system for the program	✓	
	Develop a Program Communication and visibility strategy	✓	

Component 5: Contd.

Output 5.3	Sub-Activities	Quarter	
		3	4+
Awareness and sensitization on climate change adaptation created	Create awareness on climate change, impacts and adaptation: through Radio program (local language and Kiswahili) and in public meetings		✓

Programme management, coordination and M&E

- ✓ Domiciled within KEFRI structure
- ✓ Established management team
- ✓ Have factored activities in annual performance contracts
- ✓ Have established Technical implementation committee and
- ✓ Today we will establish Project Site Steering Committee

Thank you for your attention



Presentation 3: Appointment of Project Site Steering Committee Dr. Gabriel Muturi

**Integrated Programme to Build Resilience to
Climate Change and Adaptive Capacity of
Vulnerable Communities in Kenya**

LOITOKITOK PROJECT

Project Site Steering Committee

TERMS OF REFERENCE

1. Review proposed quarterly workplans for adequacy and recommend appropriate changes
2. Link KEFRI and other agencies staff to appropriate project sites and provide liaison with community members during implementation
3. Assess effectiveness of implemented activities and recommend appropriate measure to enhance effectiveness and efficiency

TERMS OF REFERENCE

4. Ensure project publicity and visibility
5. Undertake any other relevant role that might arise during the execution of the project
6. Meet monthly and quarterly and make report to the KEFRI-Project Focal Officer

Proposed membership

1. Sub-County Commissioner
2. Sub-County Administrator
3. Sub-County Agricultural Officer
4. Sub-County Forest Officer
5. Sub-County Water Officer
6. Community Representative - Kuku Ward
7. Community Representative - Rombo Ward
8. Community Representative - Kimana Ward
9. Community Representative - Mbirikani Ward
10. Community Representative - Entoinet Ward

Kenya Forestry Research Institute
P.O. Box 20412-00200, Nairobi, Kenya
Tel:+254-724 259 781/2, +254-722-157 414
Email:director@kefri.org Website: www.kefri.org